

SINCE 1965: THE UTAH SPORTSMAN'S VACATION &

RV SHOW

UTAH'S OUTDOOR EXPO

FEB. 16-19, 2023

MOUNTAIN AMERICA EXPO CENTER

FUTURE SHOW DATES:

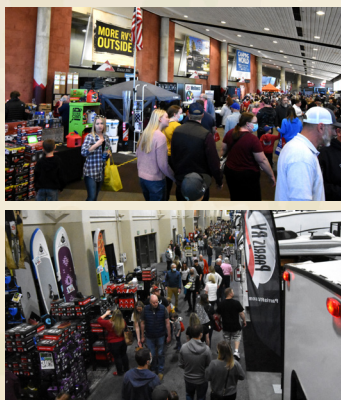
February 15-18, 2024 | February 12-15, 2026

February 13-16, 2025 | February 18-21, 2027

WHY ARE OUR SHOWS SUCCESSFUL?
BECAUSE WE PROMOTE!

- TV and Radio
- Outdoor: Bustails, Billboards and Digital Boards
- Internet Banners on TV and Radio websites
- E-mail Blasts
- Online Ticket discounts
- Social Media: @UtahRvShow

greenband.com | 801.485.7399



RV SHOW

[illegible]

Thursday, February 16 2pm to 9pm
Friday, February 17 Noon to 10pm
Saturday, February 18 11am to 9pm
Sunday, February 19 11am to 6pm

Tuesday, February 14..... 9am to 9pm
Wednesday, February 15..... 9am to 9pm
Thursday, February 16 9am to Noon
(No move-in after 12pm on opening day)

Sunday, February 19 6:15pm to 11:55pm
Monday, February 20 8am to 3pm
(No lobby move-out before 6:15pm Sunday)

RV accessories, hunting, fishing and outfitters, tourism, resorts, travel destinations, RV parks and campsites, outdoor gear, sporting goods, ATVs, scooters, bikes, trucks, towing vehicles, electric carts and more.

10X10	\$1,595	20X20	\$6,380
10X20	\$3,190	20X30	\$9,570
10X30	\$4,785	Add \$150 for each 10x10 corner.	

- Exhibitor listing and link on event website
- Listing in the official show guide sent to over 40,000 homes and to attendees at the event.

1000 sq. ft. min.	\$14.00/sq.ft.
3000 sq. ft. min.	\$11.50/sq.ft.
6000 sq. ft. min.	\$4.20/sq.ft.

(No accessories in bulk spaces) Bulk Exhibit spaces are limited to the display of new recreational vehicles only.

- 65% of attendees are between the ages of 18-56, 34% are over 56.
- 72% of attendees earn over \$75,000+ per year
- 78% are home owners
- 51% plan to buy a new RV in the next year

- Lobby Banners
- Ad on digital signs located throughout the show
- Logo on e-tickets
- Ad in buyers guide

Contact Dave: bakergroup Utah@gmail.com

Call 801.485.7399
Debra Greenband ~ dmgreeband@greenband.com
Jon Greenband ~ jon@greenband.com
4525 S. 2300 E. Suite 200, Salt Lake City, UT 84117
Greenband.com UtahRvShow.com
Fax: 801.485.0687

*Move-in and move-out times subject to change. Please refer to exhibitor manual. Floor plan and rates for exhibit space subject to change without notice. For an up-to-date floor plan visit greenband.com ***Surveyed at the 2022 show

Visit greenband.com/#rv for larger floor plan.